



COMMUNITY HEALTH NEEDS ASSESSMENT

2021

(tax year 2020)



440 Hopkinsville Street
Greenville, KY 42345
(270) 338-8000

<https://www.owensborohealth.org>

Table of Contents

Listing of Figures.....	3
Listing of Tables.....	4
Executive Summary.....	5
Acknowledgments.....	7
1. Introduction.....	8
1.1 CHNA Report Objective.....	8
1.2 Owensboro Health Muhlenberg Community Hospital.....	8
1.3 Muhlenberg County Health Department.....	8
1.4 CHNA Defined Community.....	8
Letter from Owensboro Health Muhlenberg Community Hospital COO.....	9
2. Evaluation of Progress Since Prior CHNA.....	10
3. CHNA Process.....	12
3.1 CHNA Process Overview.....	12
3.2 Community Steering Committee.....	12
3.3 Collection of Muhlenberg County Data.....	13
4. Muhlenberg County Secondary Data.....	14
5. Community Feedback.....	18
5.1 Community Survey.....	18
5.2 Focus Groups.....	21
5.3 Key Informant Interviews.....	23
6. Selected Priority Areas.....	26
7. Conclusion.....	27
Appendix.....	28

Listing of Figures

Figure 1. CHNA Process Overview..... 12

Figure 2. Community Survey Responses, “What could be done in Muhlenberg County to better meet your health needs?”..... 20

Listing of Tables

<i>Table 1. 2021 CHNA Community Steering Committee.....</i>	13
<i>Table 2. Demographics.....</i>	14
<i>Table 3. Physical Environment.....</i>	15
<i>Table 4. Social and Economic Environment.....</i>	15
<i>Table 5. Clinical Care.....</i>	16
<i>Table 6. Health Behaviors.....</i>	16
<i>Table 7. Health Outcomes.....</i>	17

Executive Summary

OH Muhlenberg, LLC (“OHM”), a Kentucky limited liability company, is wholly-owned by Owensboro Health Inc. (OHI) and operates Owensboro Health Muhlenberg Community Hospital, a 90 bed acute care hospital in Greenville, Muhlenberg County, Kentucky (“OH Muhlenberg Community Hospital”). Effective July 1, 2015, in connection with the OHM’s purchase of substantially all of the assets of Muhlenberg Community Hospital, OHM began leasing and operating the hospital facility under a lease agreement with Muhlenberg Community Hospital that extends through June 30, 2035.

Owensboro Health Muhlenberg Community Hospital (OHMCH) is pleased to present its 2021-2024 Community Health Needs Assessment (CHNA). This CHNA report includes health assessment data collected in a collaborative process with the Muhlenberg County Health Department. OHMCH contracted with the Community and Economic Development Initiative of Kentucky (CEDIK) to conduct a CHNA in accordance with the Affordable Care Act (ACA) and section 501(r) of the internal revenue code for nonprofit tax-exempt hospitals. This CHNA is the second report prepared by CEDIK for OHMCH, the first was in 2018. This report will be used to create an implementation plan with wide community input to address the identified health needs for the community served by OHMCH over the next three years. OHMCH Board of Directors approved this CHNA on May 17th, 2021.

Summary of Findings

Methodology

CEDIK facilitated the process of primary data collection through community surveys, focus groups and key informant interviews to create an implementation plan to address identified health needs. In addition, county specific secondary data was gathered to help examine the social determinants of health. Throughout the process, CEDIK and the community steering committee made it a priority to get input from populations that are often not engaged in conversations about their health needs or gaps in service. CEDIK conducted eleven key informant interviews to probe more deeply into health and quality of life themes within the county. Current community resources and potential barriers to accessing resources were also identified in these interviews.

This CHNA report synthesizes community health needs survey data, focus groups with vulnerable populations, and key informant interview data with social and economic data as well as health outcomes data collected from secondary sources to help provide context for the community. Below are identified themes collected from the primary data collection:

Focus Group Visioning

Muhlenberg County residents have an aspirational vision for a healthy and vibrant community that encompasses all who live, work and play here. This vision includes great schools, access to health care, affordable healthy foods and an active living mindset for all residents. In addition, a strong economy with employment that provides livable wages with benefits for employees and safe, affordable housing. This well-resourced county envisions youth who feel safe and protected, tobacco and drug free and enjoy the benefits of hiking trails, activity centers and recreation areas.

Focus Groups – Unmet Needs

CEDIK conducted focus groups with representatives of organizations in Muhlenberg County that provide services to populations that are under resourced or experience unmet health needs. The participants provided a view of health challenges and gaps in healthcare or essential services. The discussions revealed needs among children/youth, low-income and senior populations. The needs most often mentioned include: lack of affordable housing/homelessness, mental health concerns for adults and youth, substance use disorder, tobacco use and vaping and lack of physical activity in all ages. Common health issues discussed include: COPD, Cancer, High Blood Pressure and Diabetes as well as increased child abuse and domestic violence. While the county has multiple clinics for primary care some residents have difficulty scheduling appointments or navigating the health care system in general.

Key Informant - Community Themes and Strengths

OHMCH, Muhlenberg County Health Department and CEDIK obtained additional primary data through eleven supplemental interviews with individuals knowledgeable about health and quality of life needs in Muhlenberg County. CEDIK organized the data into strengths, barriers and opportunities for change in Muhlenberg County. Strengths include both healthcare assets (hospital, health department, FQHC, access to specialty care and behavioral health services) and community assets (good school system, parks and recreation, trails, fitness centers and strong commitment to collaboration among community organizations). Barriers to health care include: lack of transportation, low health literacy, stigma related to mental health conditions, challenges with missing work to seek medical care for some and a lack of motivation to prioritize health and wellness. The interviews identified a number of opportunities that could improve the health and well-being of Muhlenberg County residents including increased substance use disorder treatment, promotion of available health services, increase services for those experiencing homelessness and additional affordable housing, and adopting a county wide “culture of wellness.”

Prioritized Areas

The Muhlenberg County CHNA Steering Committee reviewed survey results, focus group and key informant interview results as well as key secondary health data. The committee considered existing local, state and national priorities, conducted an open discussion and voted on specific strategic initiatives for the county. Members identified current resources and possible barriers to resources that residents may experience. This information can assist both the hospital and the health department, as implementation plans are developed to address the prioritized health needs.

Muhlenberg County CHNA Steering Committee selected the following priority areas for action:

- **Mental Health (including Suicide)**
- **Substance Use (alcohol, tobacco, illegal drugs, prescription drug misuse)**
- **Culture of Wellness/Personal responsibility**
- **Housing and homelessness**
- **Obesity/Overweight**
- **Access to care/making services available**
- **Transportation**
- **Children being raised by people other than parents**
- **Poverty**

A plan for addressing these priority areas will be described in OHMCH 2021 Implementation Strategy.

Acknowledgements

This Community Health Needs Assessment is a joint effort by the Owensboro Health Muhlenberg Community Hospital and the Muhlenberg County Health Department and builds on the community health improvement efforts of the 2018 CHNA.

Eleven key informants shared their time and expertise to provide additional insights on strengths and needs within Muhlenberg County:

- Alyssa Manning – Felix E. Martin Jr. Foundation, President
- Curtis McGehee – Muhlenberg County Judge Executive
- Debra Gorham – Hope2All Food Pantry, Volunteer
- Gary Jones – Muhlenberg Alliance for Progress, Director of Business Development
- Gretchen Davis – Muhlenberg County Opportunity Center, Director and Illuminare Behavioral Health Services, Owner
- Krystal DeMond – Sanctuary, Inc., Case Manager
- Mark Stone – Times-Argus, Editor
- Melinda Prunty – Kentucky State Representative for Muhlenberg County
- Stacie Barton – Leader-News, Editor
- Vicki Yonts – SOAR, Program Manager
- Whitney Galyen – Community Health Centers of Western Kentucky (Pediatric Clinic), Patient Care Coordinator

The Community and Economic Development Initiative of Kentucky (CEDIK) at the University of Kentucky provided assistance with the collection and analysis of primary key informant data and compilation of this analysis. CEDIK works with stakeholders to build engaged communities and vibrant economies. If you have questions about CEDIK's assessment process, contact Melody Nall, CEDIK Extension Specialist: melody.nall@uky.edu or (859) 218-5949.

Owensboro Health Muhlenberg Community Hospital and the Muhlenberg County Health Department would like to thank CEDIK, all community partners, and key informants for their contributions to the information compiled in this document.

1. Introduction

1.1 CHNA Report Objective

The purpose of a Community Health Needs Assessment (CHNA) is to understand health needs and priorities in a given community, with the goal of addressing those needs through the development of an implementation strategy. Owensboro Health Muhlenberg Community Hospital (OHMCH) and Muhlenberg County Health Department (MCHD) have produced this CHNA in accordance with the Affordable Care Act (ACA) and section 501(r) of the internal revenue service tax code for nonprofit tax exempt hospitals. The results are meant to guide OHMCH and MCHD in the development of an implementation strategy and to help direct overall efforts to impact priority health needs. OHMCH Board of Directors approved this CHNA on May 17th, 2021.

1.2 Owensboro Health Muhlenberg Community Hospital

Owensboro Health is a nonprofit health system with a mission to heal the sick and to improve the health of the communities it serves in Kentucky and Indiana. The system includes Owensboro Health Muhlenberg Community Hospital. OHMCH is affiliated with Owensboro Health Regional Hospital, Owensboro Health Twin Lakes Medical Center, the Owensboro Health Medical Group comprising over 200 providers in more than 20 locations, three outpatient Healthplex facilities, a certified medical fitness facility and the Mitchell Memorial Cancer Center. As the second largest employer in the county, OHMCH employs nearly 500 personnel. OHMCH serves as a large contributor toward the county in many ways. Beginning in 1938, the facility offered limited services such as medical-surgical, laboratory and radiology. OHMCH has expanded to include outpatient therapies, cardiopulmonary rehabilitation, emergency services, home health, pain management, sleep lab, long-term care and Coal Miners' Respiratory Clinic. For more information, visit owensborohealth.org.

1.3 Muhlenberg County Health Department

The Muhlenberg County Health Department mission is to prevent illness and injury, promote good health and assure a safe environment to protect and improve the health of our citizens. The health department's vision for the community of Muhlenberg County is to have a healthy and safe environment, which allows all children and adults to live so that they are able to prosper physically, emotionally, spiritually and financially in the pursuit of their purpose and dream for their lives. Health department services include clinic services, environmental services, Health Access Nurturing Development Services (H.A.N.D.S.), health education, and WIC.

1.4 CHNA Defined Community

For the purposes of its CHNA, OHMCH and MCHD have defined the community as its primary service area of Muhlenberg County, Kentucky. Muhlenberg County will serve as the unit of analysis for this CHNA, and health needs discussed will pertain to residents of Muhlenberg County.

May 31, 2021

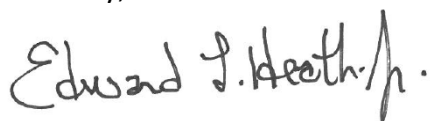
Dear Community Resident,

Thank you for your interest in Owensboro Health Muhlenberg Community Hospital's 2021 Community Health Needs Assessment (CHNA). The purpose of this assessment is to help Owensboro Health Muhlenberg Community Hospital, in partnership with our communities and healthcare partners, to identify respective health concerns, measure the impact of current public health efforts and guide the appropriate use of resources.

The data reflected in this report was collected from surveys, focus groups, and key informant interviews conducted in Muhlenberg County. These results are being reported along with health information collected from reputable national, state and local data sources.

We were thankful to be able to collaborate with the Muhlenberg County Health Department on this CHNA. Our organizations have similar missions "to improve the health of the communities we serve." Through our work together on the CHNA we hope to positively affect the identified health needs and better serve our community.

Sincerely,



Edward L. Heath, Jr., DSC, FACHE
Chief Operating Officer
Owensboro Health Muhlenberg Community Hospital



2. Evaluation of Progress Since Prior CHNA

OHMCH provides leadership through in-kind staff to serve and assist with the operations of the Muhlenberg County Health Coalition and provide financial support through mini-grants and sponsorships to organizations who seek to impact priority health areas through their projects and programming. In addition to these, below are additional specific ways OHMCH is addressing each identified need from the Muhlenberg County 2018 CHNA.

Residents' (vulnerable populations) lack of knowledge on available community and health resources in the county

- We distribute a copy of Elevate magazine to 10,000 households across the county which contains information about health issues, activities and resources available in our community.
- Our social media Facebook page informs citizens of programs and services offered by our organization (flu and COVID-19 vaccination, sports physicals, respiratory screenings, tobacco cessation classes, new providers, etc.).
- We collaborated with the Muhlenberg County Health Coalition and the Felix E. Martin Jr. Foundation to fund the printing of 25,000 copies of a Muhlenberg County Resource Directory and coordinated distribution to many local agencies and departments within OHMCH.

Adult obesity

- We support and plan community/employee walks and runs. (Note: OHMCH is the second largest employer in the county. With a small county population our employees represent a large segment of the population so supporting efforts to address adult obesity with our employee base and their families can have an impact on the entire community.)
- We collaborate with the Owensboro Health Healthpark to provide all Muhlenberg County elementary and middle school students with a free school health assessment every other year and mail additional information to their families with the student's results and education on healthy food and beverage choices and physical activity.
- Our providers make referrals as appropriate to a new access point: Owensboro Health Surgical Weight Loss Center.

Mental health – depression, counseling and testing for mental health disorders

- We have increased depression screenings for patients in Emergency Room, Inpatient, and Long-Term Care.
- Our patients have increased access to inpatient services provided by Owensboro Health Regional Hospital.

- We continue to collaborate and partner with Pennyroyal Mental Health Center.
- Access to behavioral health telehealth services when in-person appointments are not available.
- We support educational offerings regarding suicide prevention.

Youth health indicator needs – teen birth rate, obesity, lack of physical activity, lack of out of school meaningful activities*

- We provide funding for school nurses and health technicians at each school in Muhlenberg County to address students' health needs and provide prevention and education on priority health issues.
- This year, since we were unable to conduct a large free sports physical event, we provided reduced cost sports physicals for local athletes.
- We conducted free school health assessments to students in Muhlenberg County elementary and middle schools with follow-up information provided about health food and beverage choices and the importance of physical activity.
- We assist in the promotion of physical activity and wellness events at local walking trails, athletic centers, Lu-Ray Park and Amphitheater.
- We partner with community organizations to support youth activities and events.

Substance use – prescription, illegal and illicit substances

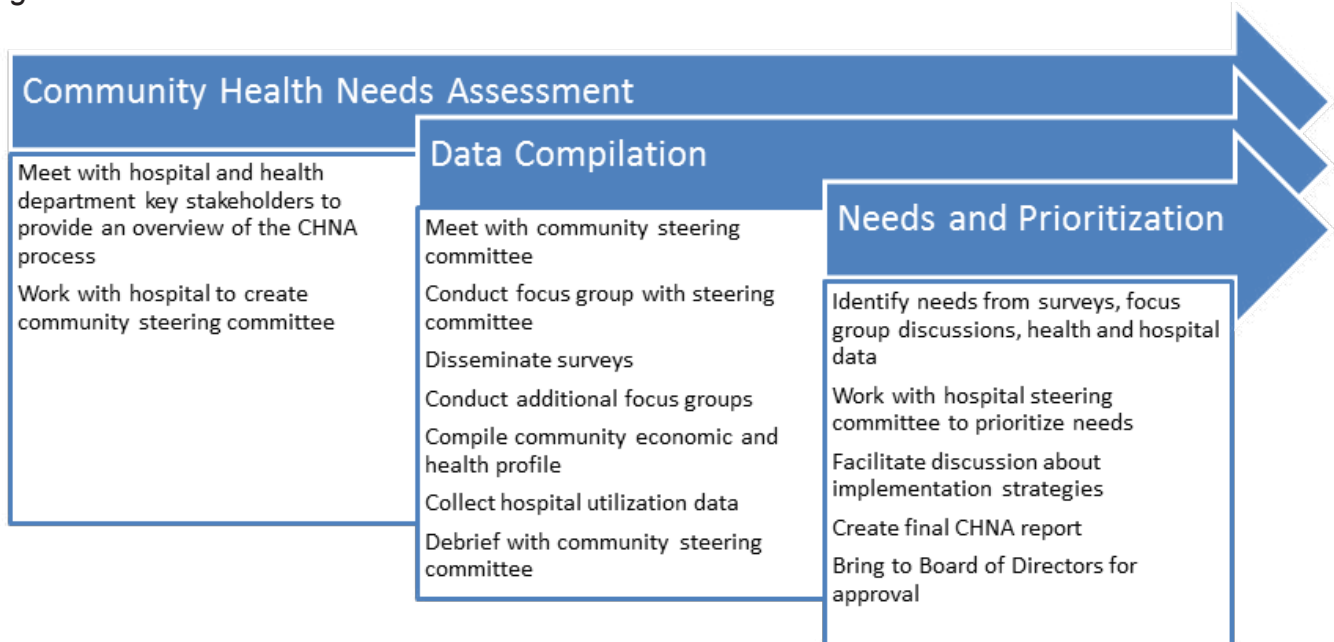
- Medical staff formed an opioid stewardship committee whose charge is to ensure safe opioid prescribing and assist in the decrease of opioid abuse and misuse by patients in our care.
- Enhanced criteria for screening and assessing/reassessing pain.
- Algorithms for the appropriate prescribing.
- Pharmacological therapies.
- We provide patient education to reduce the risks of opioid use.
- We offer Freedom From Smoking classes at no cost to participants at our OHMCH Coal Miners' Respiratory Clinic.

3. CHNA Process

3.1 CHNA Process Overview

Here is an overview of the CHNA process that CEDIK uses based on the IRS guidelines:

Figure 1. CHNA Process Overview.



3.2 The Community Steering Committee

The Community Steering Committee plays a vital role to the CHNA process. CEDIK provides a list of community leaders, agencies and organizations to the hospital and health department to assist them in the recruitment of members that would facilitate broad community input.

These committee members represent organizations and agencies that serve the Muhlenberg County population in a variety of areas that relate to the health of the residents. By volunteering their time, the committee members enable the hospital and health department to acquire input from residents that are often not engaged in conversations about their health needs. The steering committee provides both an expert view of the needs they see while working with clients they serve and in extensive distribution of the community survey. Conducting this assessment during the COVID-19 pandemic added new challenges in accessing community input, however the community steering committee was committed to the process both with promoting the survey through social media and through organizational email distribution.

Owensboro Health Muhlenberg Community Hospital and the Muhlenberg County Health Department scheduled the first steering committee meeting via Zoom where CEDIK representatives introduced the assessment process, the role and duties of a committee members and conducted a focus group. A final steering committee was held via Zoom for the reporting of primary data collected from surveys, focus groups and key informant interviews. After the primary data and secondary health data was presented, CEDIK staff led a prioritization process of the identified health needs resulting in recommendations for the hospital, health department and community to address over the next three years.

Table 1. 2021 CHNA Community Steering Committee.

Name	Organization
Diana Anderson	Pathway of Hope
Tony Armor	Mayor, Central City
Cathy Bethel	Muhlenberg County Health Department
Jackie Bratcher	Muhlenberg County Health Department
Jessica Browning	Owensboro Health Muhlenberg Community Hospital
Bennie Dukes	Muhlenberg County Opportunity Center & Celebrate Recovery
Kelly Durall	Community Health Centers of Western Kentucky
Carla Embry	Muhlenberg County Board of Education – FRYSC
Ed Heath	Owensboro Health Muhlenberg Community Hospital
Whitney Peay	Green River Regional Educational Cooperative
Julie Pendley	Muhlenberg County Board of Education – Nurses
Cheryl Spain	Muhlenberg County Senior Center
Chris Sparks	Pennyroyal Center
Dr. James Tidwell	Owensboro Health
Jan Yonts	Mayor, Greenville

3.3 Collection of Muhlenberg County Data

The assessment process included collecting secondary data related to the health of the community. Social and economic data as well as health outcomes data were collected from secondary sources to help provide context for the community. Data sources are listed next to the tables and further information (when available) is in the Appendix.

4. Muhlenberg County Secondary Data

The assessment process included collecting secondary data related to the health of the community. Social and economic data as well as health outcomes and providers data were collected from secondary sources to help provide context for the community (see below). In addition, CEDIK compiled hospital utilization data to better understand who was using the facility and for what services (next section). Finally, with the assistance of the Community Steering Committee, input from the community was collected through key informant interviews and surveys.

First we present the demographic, social, economic and health outcomes data that were compiled through secondary sources. These data that follow were retrieved from the County Health Rankings website, April 2021. For data sources see appendix.

Table 2. Demographics.

Indicator	Muhlenberg County	Kentucky	National Level
2019 Population Estimate	30,744	4,467,673	328,239,523
Percent of Population under 18 years	20.7%	22.6%	22.6%
Percent of Population 65 year and older	19.1%	16.4%	15.6%
Percent of Population Non-Hispanic White	92.1%	84.3%	60.7%
Percent of Population Non-Hispanic Black	4.8%	8.2%	12.5%
Percent of Population Hispanic	1.5%	3.8%	18.1%
Percent of Population Asian	0.3%	1.6%	8.7%
Percent of Population American Indian & Alaska Native	0.2%	0.1%	4%
Percent Native Hawaiian/Other Pacific Islander	0.0%	0.1%	0.2%
Percent of the Population Females	49.0%	50.7%	50.7%
Percent of the Population Rural	68.4%	41.6%	19.3%
Percent of the Population not Proficient in English	0.0%	1.0%	4%

Table 3. Physical Environment.

	Muhlenberg County	Kentucky	Top US Performers
Average daily density of air pollution - PM 2.5	11.4	10.7	6.1
Presence of drinking water violations	Yes		
Percentage of severe housing problems with at least one of the following; Overcrowding, high housing costs, or lack of kitchen or plumbing facilities	9%	14%	9%
Percentage of workforce driving alone to work	88%	82%	72%
Percentage of workforce commuting alone for more than 30 minutes	32%	30%	16%

Table 4. Social and Economic Environment.

Indicator	Muhlenberg County	Kentucky	Top US Performers
Percentage of adults ages 25 and over with a high school diploma or equivalent	90%	90%	96%
Percentage of ages 25-44 with some post-secondary college	47%	62%	73%
Percent of unemployed job-seeking population 16 years and older	6.7%	4.3%	2.6%
Percent of children in poverty	23%	22%	11%
Percent of children qualifying for free or reduced lunch	58%	60%	32%
Disconnected Youth	14%	8%	4%
Income inequality ratio	4.8	5.1	3.7
Percent of single-parent households	29%	34%	20%
Median Household Income	\$43,700	\$50,200	\$69,000
Social Association Rate per 10,000 population	20.4	10.7	18.4
Violent crime rate per 100,000 population	79	222	63
Injury death rate per 100,000 population	94	93	58

Table 5. Clinical Care.

Indicator	Muhlenberg County	Kentucky	Top US Performers
Percent uninsured adults	8%	7%	7%
Percent uninsured children	4%	4%	3%
Primary care provider ratio	2,200:1	1,520:1	1,030:1
Dentist ratio	2,800:1	1,540:1	1,240:1
Mental health provider ratio	1,400:1	440:1	290:1
Other primary care provider ratio	962:1	732:1	665:1
Preventable hospital stays	6,485	5,949	2,761
Percent of population receiving flu vaccinations	32%	45%	53%
Percent of population receiving mammography screening	42%	40%	50%

Table 6. Health Behaviors.

Indicator	Muhlenberg County	Kentucky	Top US Performers
Percent adult smokers	22%	25%	14%
Percent obese adults with BMI >=30	36%	34%	26%
Food Environment Index	7.6	7.0	8.6
Percent physically inactive adults	35%	29%	20%
Percent of population with access to exercise opportunities	52%	71%	91%
Percent of adult excessive drinking	15%	17%	13%
Percent alcohol-impaired driving deaths	19%	26%	11%
Chlamydia rate newly diagnosed per 100,000 population	428.3	433.7	161.4
Teen birth rate ages 15-19 per 1,000 population	50	34	13
Percent of population food insecure	15%	15%	9%
Percent of population limited access to healthy foods	2%	6%	2%
Drug overdose mortality rate per 100,000 population	14	32	10
Motor vehicle crash deaths per 100,000 population	18	17	9

Table 7. Health Outcomes.

Indicator	Muhlenberg County	Kentucky	Top US Performers
Premature death rate	9,700	9,700	5,500
Child mortality rate	70	60	40
Percent of live births with low birth weight	8%	9%	6%
Percent of population in fair/poor health	23%	24%	12%
Physically unhealthy days	5.2	5.1	3.1
Percent of population in frequent physical distress	16%	17%	9%
Mentally unhealthy days	4.8	5	3.4
Percent of population in frequent mental distress	15%	16%	11%
Percent of population who are diabetic	12%	13%	7%
HIV prevalence rate	n/a	184	41

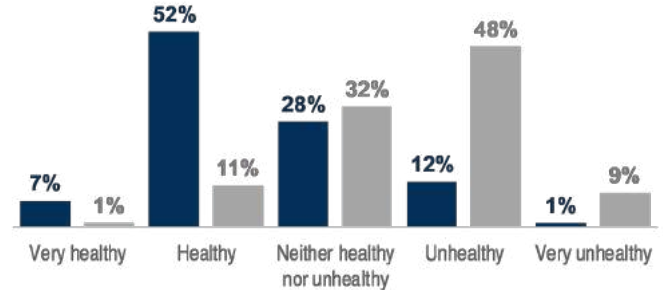


Households are **currently without health insurance.**

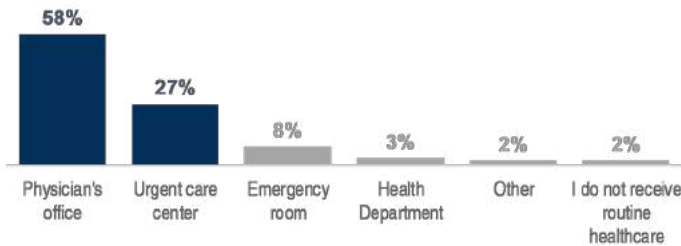


Households have **delayed healthcare due to lack of money and/or insurance.**

Respondent's rating **of their health** and the **health of the people in this community:**



Where households go most often for healthcare*:

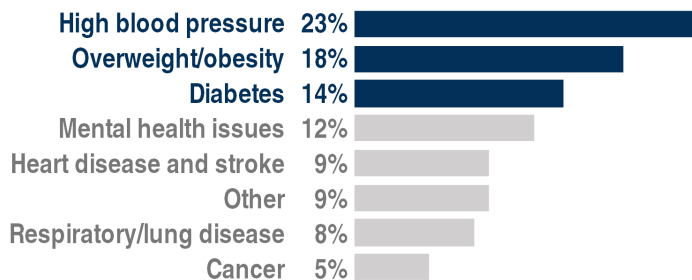


*Reasons that respondents do not receive routine healthcare: can't take off from work (15%), no specialist in my community (14%), can't afford it (26%), no appt available (15%).

Households eligible for the following:

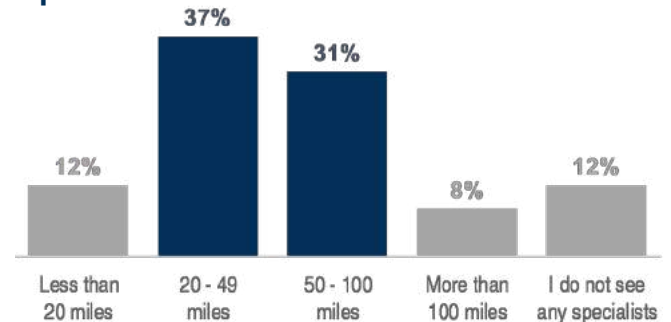
Medicare	31%
Medicaid	20%
Public housing assistance	2%
SNAP (food stamp program)	10%
VA	4%
Commercial/private insurance	33%

Top three health challenges that households face:



Other: Multiple sclerosis (MS), Thyroid, Anxiety and/or depression, Autoimmune disorder

How far households travel* to see a specialist:



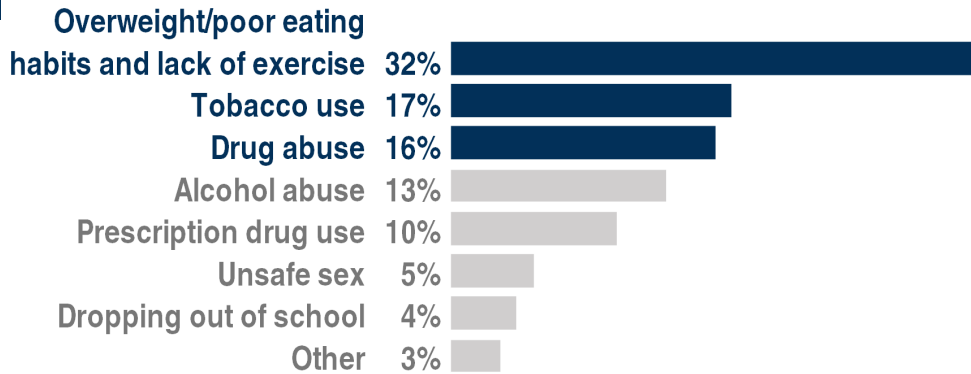
*98% of households use a car to get to health services.



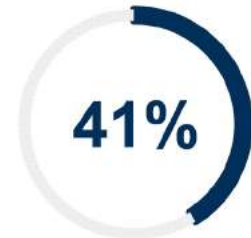
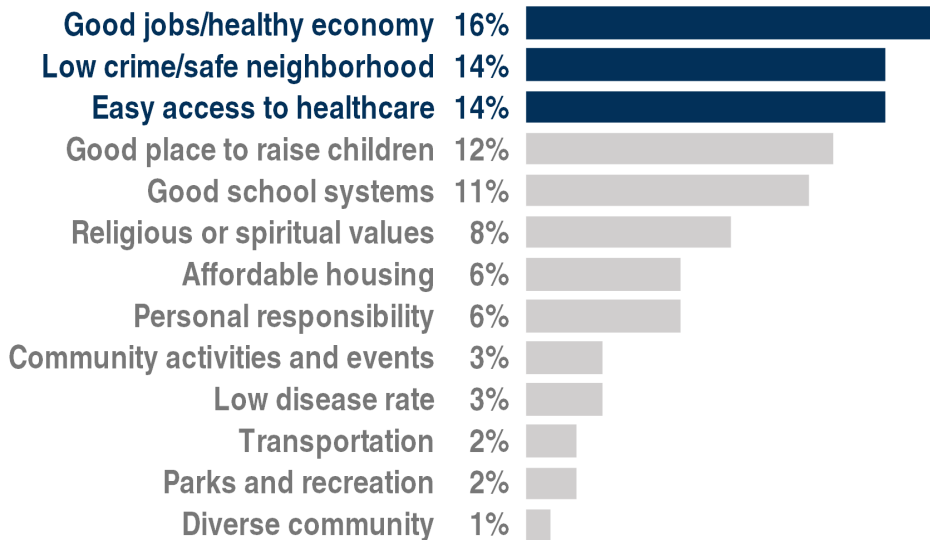
Households **satisfied with the ability to access healthcare services in Muhlenberg County.**

* Not all survey respondents answered every question. Respondents = total number of responses for each question; Households = questions where respondents were asked if "anyone in their household" were impacted.

Respondent rating of **top three risky behaviors:**

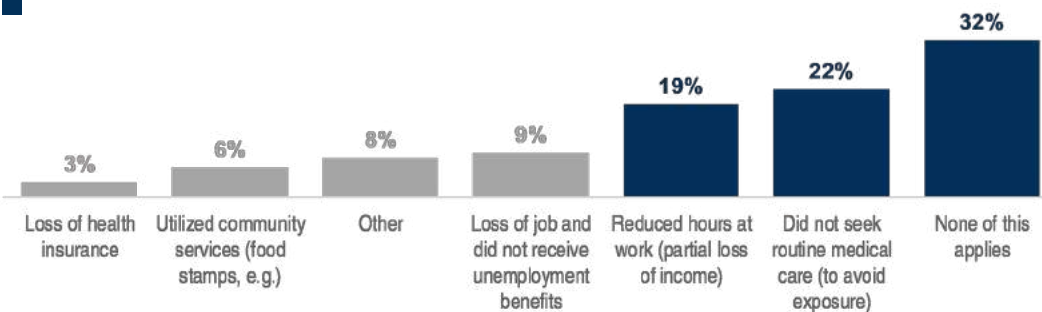


Respondent rating of **top three most important factors for a healthy community:**



Households that think **Muhlenberg County meets these factors.**

Ways households were **affected by the COVID-19 pandemic:**



5.2 Focus Groups

Focus groups provide an opportunity to have a facilitated discussion about health needs and issues that affect residents of Muhlenberg County. Specifically, organizations that work with or represent underserved populations such as children, families and senior citizens. Three focus groups were conducted during the assessment time frame and 22 individuals participated in the discussions. Below is the summary of the questions and responses of the participants thoughts, opinions and experiences related to healthcare needs in their community.

What is your vision for a healthy Muhlenberg County?

- Good health and quality of life for residents
- Great schools
- Drug free
- Access to mental health services and reduced stigma
- Less alcohol abuse
- Healthy choices – food, physical activity
- Access to resources – healthy food, transportation, prescription medications
- Affordable, safe housing
- Jobs with a living wage and benefits
- Strong economy
- Active living mindset - with residents using walking trails, activity centers and work out facilities
- Decreased tobacco use and vaping
- Lower suicide rates

What are the most significant health problems in Muhlenberg County?

- Mental health – youth and adults*
- Substance Use
- Tobacco Use – COPD, lung disease
- High Blood Pressure
- Obesity – adults and children
- Diabetes
- Hepatitis
- Kidney Disease
- Child abuse, domestic violence
- Cancer – colon, breast and cervical highest
- Lack of awareness of resources by those who need the resources most
- Food insecurity and lack of healthy, affordable food
- Affordable housing
- Poverty
- Lack of physical activity – all ages (increased during COVID-19)

*(*Mental Health youth - Youth suicide, Stigma, Parents not recognizing the issues or accessing current resources. Mental health adults - Anxiety, depression, loneliness, social isolation, stigma in asking for help, stress.)*

What is your perception of the current healthcare system including the hospital, health department, physicians, EMT, and other essential services in Muhlenberg County?*

*(*Essential services include public utilities, access to healthy food, access to housing, etc.)*

- People in community without access to healthy food
- Transportation
- Healthplex – one-stop shop for tests, labs and physician visits, very convenient care
- Our healthcare system has improved over the years
- Pediatric clinic at Community Health Center of Western KY is a positive for our area
- Mountain Comprehensive Care providing counseling services in schools is very helpful
- Lack of mental health options for adults, stigma for asking for help prevalent
- Need for safe, affordable and low-income housing
- Specialists do provide services in the county reducing travel
- Homelessness needs to be addressed
- Support for grandparents (or other family members) raising grandchildren

What could be done in Muhlenberg County to better meet your or your family's health needs?

- Health Coalition should “Stay the course” as it helps meet health needs
- Suicide prevention coalition
- Reduce Tobacco use – promote classes, NRT, 100% tobacco free schools, and work places
- Empower people to utilize the health resources in the county
- Continue to distribute community resources guide.
- Add more support groups – for top health issues (chronic diseases)
- Healthy food options – farmer’s market, and increased produce access
- Increased counseling/treatment for substance use and mental health
- Community effort to remove stigma of asking for help – normalize taking care of your mental health
- Housing – need safe and affordable options



5.3 Key Informant Interviews

As a mechanism to examine needs that surfaced in focus group discussions, the hospital and health department leadership provided contact information for potential key informant interviews to be conducted. Below is the list of interviewees and a summary of their responses highlighting comments, identifying the strengths of the community, challenges/barriers in broader healthcare system and opportunities for improving the community's health.

Participants:

1. Alyssa Manning – Felix E. Martin Jr. Foundation, President
2. Curtis McGehee – Muhlenberg County Judge Executive
3. Debra Gorham – Hope2All Food Pantry, Volunteer
4. Gary Jones – Muhlenberg Alliance for Progress, Director of Business Development
5. Gretchen Davis – Muhlenberg County Opportunity Center, Director and Illuminare Behavioral Health Services, Owner
6. Krystal DeMond – Sanctuary, Inc., Case Manager
7. Mark Stone – Times-Argus, Editor
8. Melinda Prunty – Kentucky State Representative for Muhlenberg County
9. Stacie Barton – Leader-News, Editor
10. Vicki Yonts – SOAR, Program Manager
11. Whitney Galyen – Community Health Centers of Western Kentucky (Pediatric Clinic), Patient Care Coordinator

Strengths of community health in Muhlenberg County

- Collaboration and partnerships among organizations in the community
- OHMCH does a great job – 5 star rating
- Hospital recruiting locals back as physicians and other health care providers
- Strong community health coalition (40-50 members) – very important during COVID
- Mental health services increasing
- HD HANDS program
- Healthplex – nice addition to care
- Access to a variety of healthcare providers
- KASPER and physician education about opioids – resulting in reduction in pain prescriptions written
- Clinics available – Community Health Centers of Western Kentucky and Baptist Health Urgent Care Clinic
- Access to recreation – Central City Convention Center, Parks and Rec, Rails to Trails
- Mobile dental unit that visits schools

Challenges or barriers of community health in Muhlenberg County

- Transportation – to activities and to health care
- Resources are not known, or how to access
- Low health literacy – how to take medications, make appointments, ask follow-up questions
- Stigma – mental health, substance use disorder
- Push-back from work places (time off to see provider)
- Motivation to prioritize health
- Utilize current resources
- Need stronger policies – that encourage healthy behaviors
- Lack of providers, lack of specialty providers to mental health
- A better educated populace would lead to better health outcomes

Opportunities for community health in Muhlenberg County

- Long wait-list for subsidized housing
- Homeless shelter and transitional housing
- Mental health – reduce stigma for accessing services, increase services available
- Increase pediatric care at hospital
- Transportation to services – doctor appointments, pharmacy, grocery, library, parks
- More access to specialists – that see patients in the county (Sports medicine, cardiologists, endocrinologist, allergist, OB/GYN)
- Nutrition counselor – how to eat and exercise to be healthy
- Access to healthy food and changing mindset of eating healthy versus fast or processed foods
- Greater access to recreation/exercise – some cannot afford the monthly fees
- Create a “culture of wellness” in the county for all
- Support grandparents raising grandchildren
- Homeless population – need a plan for housing that is safe to assist with meeting basic needs and keeping them healthy.
- Substance use disorder treatment – long term, out-patient treatment needed in county
- The hospital could work with newspapers through articles about health issues in the county and promote resources and information on screenings, etc.
- Teen Pregnancy resources needed – education, prevention, groups for teen moms/parents, class at school with daycare to keep them in school to finish their education

COVID -19 Effects and Lessons Learned

- Flexibility in providing services
- Virtual work can be a struggle for some
- The importance of connection to others – “check on your neighbor”
- Providing meals for kids through schools revealed knowledge of how families are living
- Domestic violence is a prevalent issue in our area and on rise nationally
- Mindset shift – importance of self-care and knowing when you are at capacity and when to ask for help
- COVID task force developed – increased communication with Muhlenberg County Health Department and CDC guidelines
- Mentally divisive – example mask wearing, anger over small businesses closed but others left open
- Increased depression and social isolation
- Adults – missed preventive health screenings, not getting regular check ups
- Impact on children and their education will not be known for awhile
- Some experiencing unemployment and food insecurity for the first time
- Long-term health effects from those that recovered from COVID-19 – heart issues, hair loss and more



6. Selected Priority Areas

The final Muhlenberg County CHNA steering committee meeting was held via Zoom, a virtual platform for meetings, March 30, 2021, to review findings from the community surveys, focus groups, key informant interviews and county specific secondary health data.

The process of priority selection followed the Association for Community Health Improvement (ACHI) recommendations to consider:

- The magnitude of the problem (i.e., the number of people or the percentage of a population impacted).
- The severity of the problem (i.e., the degree to which health status is worse than the national norm).
- A high need among vulnerable populations.
- The community's capacity/willingness to act on the issue.
- The ability to have a measurable impact on the issue.
- Community resources already focused on the issue.
- Whether the issue is a root cause of other problems.

CEDIK staff led a facilitated discussion with members of the committee on the findings and identified the following to recommend as needs for the hospital to address in the next three years:

- Mental Health (including Suicide)
- Substance Use (alcohol, tobacco, illegal drugs, prescription drug misuse)
- Culture of Wellness/Personal responsibility
- Housing and homelessness
- Obesity/Overweight
- Access to care/making services available
- Transportation
- Children being raised by people other than parents
- Poverty

7. Conclusion

Muhlenberg County is a community with many assets, with a caring community spirit being an important driver in the approach to community health improvements through collaborative efforts. While there are many areas of need in the county, this report identifies priority areas that Owensboro Health Muhlenberg Community Hospital will use for guidance in planning its community benefit efforts and strategic direction for addressing health needs related to mental health (including suicide), substance use, culture of wellness/personal responsibility, housing and homelessness, obesity/overweight, access to care/making services available, transportation, children being raised by people other than parents, and poverty. Further investigation may be necessary for determining and implementing the most effective interventions.

An implementation strategy will be developed and rolled out over the next three years; periodic evaluation of goals/objectives for each identified priority will be conducted to assure that progress is on track per the implementation plan.

Community feedback to the report is an important step in the process of improving community health. Please send your comments to Jessica Browning at Jessica.L.Browning@owensborohealth.org.



Appendix

Source listing for secondary data used in this report.

Demographics

Indicator	Original Source	Year
2019 Population Estimate	Census Population Estimates	2019
Percent of Population under 18 years	Census Population Estimates	2019
Percent of Population 65 year and older	Census Population Estimates	2019
Percent of Population Non-Hispanic White	Census Population Estimates	2019
Percent of Population Non-Hispanic Black	Census Population Estimates	2019
Percent of Population Hispanic	Census Population Estimates	2019
Percent of Population Asian	Census Population Estimates	2019
Percent of Population American Indian & Alaska Native	Census Population Estimates	2019
Percent Native Hawaiian/Other Pacific Islander	Census Population Estimates	2019
Percent of the Population Females	Census Population Estimates	2019
Percent of the Population Rural	Census Population Estimates	2019
Percent of the Population not Proficient in English	American Community Survey	2015-2019

Physical Environment

Indicator	Original Source	Year
Average daily density of air pollution - PM 2.5	Environmental Public Health Tracking Network	2016
Presence of drinking water violations	Safe Drinking Water Information System	2019
Percentage of severe housing problems with at least one of the following; Overcrowding, high housing costs, or lack of kitchen or plumbing facilities	Comprehensive Housing Affordability Strategy (CHAS) data	2013-2017
Percentage of workforce driving alone to work	American Community Survey, 5-year estimates	2015-2019
Percentage of workforce commuting alone for more than 30 minutes	American Community Survey, 5-year estimates	2015-2019

Social and Economic Environment

Indicator	Original Source	Year
Percentage of adults ages 25 and over with a high school diploma or equivalent.	American Community Survey, 5-year estimates	2015-2019
Percentage of ages 25-44 with some post-secondary college	American Community Survey, 5-year estimates	2015-2019
Percent of unemployed job-seeking population 16 years and older	Bureau of Labor Statistics	2019
Percent of children in poverty	Small Area Income and Poverty Estimates	2019
Percent of children qualifying for free or reduced lunch	National Center for Education Statistics	2018-2019
Disconnected Youth	American Community Survey, 5-year estimates	2015-2019
Income inequality ratio	American Community Survey, 5-year estimates	2015-2019
Percent of single-parent households	American Community Survey, 5-year estimates	2015-2019
Median Household Income	Small Area Income and Poverty Estimates	2019
Social Association Rate per 10,000 population	County Business Patterns	2018
Violent crime rate per 100,000 population	Uniform Crime Reporting - FBI	2014 & 2016
Injury death rate per 100,000 population	National Center for Health Statistics - Mortality Files	2015-2019

Clinical Care

Indicator	Original Source	Year
Percent uninsured adults	Small Area Health Insurance Estimates	2018
Percent uninsured children	Small Area Health Insurance Estimates	2018
Primary care provider ratio	Area Health Resource File/American Medical Association	2018
Dentist ratio	Area Health Resource File/National Provider Identification file	2019
Mental health provider ratio	CMS, National Provider Identification	2020
Other primary care provider ratio	CMS, National Provider Identification	2020
Preventable hospital stays	Mapping Medicare Disparities Tool	2018
Percent of population receiving flu vaccinations	Mapping Medicare Disparities Tool	2018
Percent of population receiving mammography screening	Mapping Medicare Disparities Tool	2018

Health Behaviors

Indicator	Original Source	Year
Percent adult smokers	Behavioral Risk Factor Surveillance System	2018
Percent obese adults with BMI >=30	United States Diabetes Surveillance System	2017
Food Environment Index	USDA Food Environment Atlas, Map the Meal Gap from Feeding America	2015 & 2018
Percent physically inactive adults	United States Diabetes Surveillance System	2017
Percent of population with access to exercise opportunities	Business Analyst, Delorme map data, ESRI, & US Census Tigerline Files	2010 & 2019
Percent of adult excessive drinking	Behavioral Risk Factor Surveillance System	2018
Percent alcohol-impaired driving deaths	Fatality Analysis Reporting System	2018
Chlamydia rate newly diagnosed per 100,000 population	National Center for HIV/AIDS, Viral Hepatitis, STD, and TB Prevention	2018
Teen birth rate ages 15-19 per 1,000 population	National Center for Health Statistics - Natality files	2013-2019
Percent of population food insecure	Map the Meal Gap	2018
Percent of population limited access to healthy foods	USDA Food Environment Atlas	2015
Drug overdose mortality rate per 100,000 population	National Center for Health Statistics - Mortality Files	2017-2019
Motor vehicle mortality rate per 100,000 population	National Center for Health Statistics - Mortality Files	2013-2019

Health Outcomes

Indicator	Original Source	Year
Premature death rate	National Center for Health Statistics - Mortality Files	2017-2019
Child mortality rate	National Center for Health Statistics - Mortality Files	2017-2019
Percent of live births with low birth weight	National Center for Health Statistics - Natality files	2013-2019
Percent of population in fair/poor health	Behavioral Risk Factor Surveillance System	2018
Physically unhealthy days	Behavioral Risk Factor Surveillance System	2018
Percent of population in frequent physical distress	Behavioral Risk Factor Surveillance System	2018
Mentally unhealthy days	Behavioral Risk Factor Surveillance System	2018
Percent of population in frequent mental distress	Behavioral Risk Factor Surveillance System	2018
Percent of population who are diabetic	United States Diabetes Surveillance System	2017
HIV prevalence rate	National Center for HIV/AIDS, Viral Hepatitis, STD, and TB Prevention	2018



Muhlenberg County Community Health Needs Assessment Survey

1. Please tell us your zip code:

2. Are you or anyone in your household satisfied with your ability to access health care services in Muhlenberg County?

- Yes
- No

3. Where do you or anyone in your household go for routine healthcare? Please choose all that apply

- Physician's office
- Emergency room
- Health department
- Urgent care center
- Other. Please specify: _____
- I do not receive routine healthcare

4. If you answered "I do not receive routine healthcare" to the above question, please select all that apply as to why:

- No appointment available
- No specialist in my community
- No transportation
- Cannot take off from work
- Cannot afford it
- Other. Please specify: _____

5. How far do you or anyone in your household travel to see a specialist?

- Less than 20 miles
- 20-49 miles
- 50-100 miles
- More than 100 miles
- I do not see any specialists

6. What do you or anyone in your household use for transportation?

- My own vehicle
- Family/friend vehicle
- Taxi/cab
- Other. Please specify: _____

7. Please select the top **THREE health challenges** you or anyone in your household face:

- Cancer
- Diabetes
- Mental health issues
- Heart disease and stroke
- High blood pressure
- HIV/AIDS/STDs
- Overweight/obesity
- Respiratory/lung disease
- Other. Please specify: _____

8. Please select the top **THREE most risky behaviors**. Choose only three:

- Alcohol abuse
- Tobacco use
- Unsafe sex
- Prescription drug use
- Overweight/poor eating habits and lack of exercise
- Dropping out of school
- Drug abuse
- Other. Please specify: _____

9. Are you or anyone in your household without health insurance currently?

- Yes
- No

10. Have you or anyone in your household delayed healthcare due to lack of money and/or insurance?

- Yes
- No

11. Are you or anyone in your household currently eligible for any of the following?

- Medicare
- Medicaid
- Public Housing Assistance
- SNAP (food stamp program)
- VA
- Commercial/private insurance

12. How would you rate your **own personal health**?

- Very healthy
- Healthy
- Neither healthy nor unhealthy
- Unhealthy
- Very unhealthy

13. How would you rate the overall **health of Muhlenberg County**?

- Very healthy
- Healthy
- Neither healthy nor unhealthy
- Unhealthy
- Very unhealthy

14. Please select the top **THREE** most important factors for a "**Healthy Community?**" Choose only three:

- Good place to raise children
- Low crime/safe neighborhood
- Good school systems
- Easy access to healthcare
- Community activities and events
- Affordable housing
- Low disease rate
- Personal responsibility
- Excellent race relationships
- Diverse community
- Good jobs/healthy economy
- Religious or spiritual values
- Transportation
- Parks and recreation
- Other. Please specify: _____

15. Do you think Muhlenberg County meets those factors?

- Yes
- No

16. What could be done in Muhlenberg County to better meet your health needs?

17. In what ways were you or your family affected by the COVID-19 pandemic? Mark all that apply.

- Loss of job and did not receive unemployment benefits
- Loss of health insurance
- Reduced hours at work (partial loss of income)
- Utilized community services (food stamps, food pantry, etc.)
- Did not seek routine medical care (to avoid exposure)
- Other. Please specify: _____
- None of the above

18. What is your age?

- 18-24
- 25-39
- 40-54
- 55-64
- 65-69
- 70 or older

19. What is your gender?

- Male
- Female

20. What ethnic group do you identify with?

- African American/Black
- Asian/Pacific Islander
- Hispanic/Latino
- Native American
- White/Caucasian
- Other. Please specify: _____

21. What is the highest level of education you have completed?

- High school
- College or above
- Technical school
- Other. Please specify: _____

22. What is your annual household income?

- \$0-24,999
- \$25,000-\$49,999
- \$50,000-\$74,999
- \$75,000-\$99,999
- \$100,000 or more
- Prefer not to answer

23. What is your current employment status?

- Unemployed
- Employed part-time
- Employed full-time
- Retired
- Other. Please specify: _____

Muhlenberg County Kentucky Resource Directory



Updated: May 2021

Compiled by: Muhlenberg County Health Coalition

[facebook.com/MuhlenbergHealthCoalition](https://www.facebook.com/MuhlenbergHealthCoalition)

Abuse/Neglect

Division of Protection & Permanency (Child & adult abuse & neglect, foster care & adoptions)	270-338-3072
KY Adult/Child Abuse Hotline	1-877-597-2331
Children's Advocacy Center	270-881-1111
National Domestic Violence Hotline	1-800-799-7233
Parents Help Line	1-800-244-5373
Partner Abuse Hotline	1-800-544-2022
Rape Crisis Center (24 Hr.)	1-800-422-1060
Sanctuary Inc. (partner abuse) (24 hr.)	270-641-0169
VINE (Victim Information & Notification)	1-800-511-1670

Aging & Assisted Living

Concordia/Maple Manor	270-338-5400
Courtyard Assisted Living	270-757-1100
Diversicare of Greenville	270-338-1523
Family Caregiver Support Program	1-800-928-7233
Muhlenberg County Senior Citizens	270-338-6222
OH Muhl Skilled Nursing Facility	270-338-8000
PADD (Pennyrile Area Development Dist.)	270-886-9484
Retired Senior Volunteer Program (RSVP)	270-338-6222
Sparks Nursing Center & Assisted Living	270-754-4838
Social Security Administration	1-800-772-1213
UMWA Health & Retirement Funds	270-824-8199
Western KY Veteran's Center	270-322-9087

Animals

Greenville Animal Hospital	270-338-0487
Muhl. Co. Animal Hospital	270-754-9459
MC Humane Society	270-338-6940

Assistance (Food, Shelter, Clothing, Utilities)

Child Support	1-800-248-1163
Department of Social Insurance	1-855-306-8959
Duvall's Chapel (F, C)	270-338-4327
Elkton Rd Church of Christ (U, F)	270-977-0024
Family Support/Food Stamps/Welfare	855-306-8959
First Baptist Church Greenville (F)	270-338-3453
First Methodist Church Central City (F)	270-754-2770
Hope2All (F)	270-602-7454
Job's Table (F, C)	270-931-5070
Lifeline for Bellsouth Customers (U)	888-757-6500
MC Baptist Association	270-338-5650
Muhlenberg Christ's Apostles' (F)	270-338-1309
Muhlenberg Co. Senior Citizens Ctr	270-338-6222
PACS (Pennyrile Allied Community Services)	270-338-5080
Pathway of Hope (Infants/toddlers)	270-377-0045
Salvation Army Family Store	270-825-3620
St. Joseph's Catholic Church	270-754-1164
United Methodist of Greenville	270-338-4502
WIC (apply at the Health Dept.)	270-754-3200

See Family Resource Centers

Career/College/Vocational Educational Assistance

Adult Education, ACE 2	270-824-1770
Drop Out Program	270-338-2871
KY Office of Vocational Rehab	1-800-372-7172
Muhlenberg Career Development Ctr	270-338-5460
Muhlenberg Co. Career Adv. Ctr	270-338-5939
Madisonville Community College (Muhlenberg Co. Extended Campus)	1-270-821-2250 270-757-9881
Muhlenberg Co. Job Corp	270-338-5460
Muhlenberg Literacy Program	270-338-2257
U.S. Social Security Administration	1-800-772-1213

Child Care/After School/Preschool

Carter Creek Baptist Preschool	270-338-0643
Central City Elem. Daycare	270-754-4474
Central City 1st Baptist Preschool	270-754-3670
Early Home- Based Head Start	270-754-5451
Early Childhood Education Center	270-543-0255
Greenville 2nd Baptist Preschool	270-338-6160
Greenville Methodist Preschool	270-338-5070
Longest Elementary Daycare	270-338-2842
Miss Rhonda's Preschool	270-871-2077
Muhlenberg South Elementary Daycare	270-476-2204
Nanny's House	270-338-0658
New Paradise Church Preschool	270-338-0282
Tiny Treasures	270-754-9050

Children/Teen Organizations & Services

CASA of Midwest Kentucky, Inc.	270-245-5112
Early Childhood Center/SOAR	270-543-0255
Early Home/Based	270-754-5451
Found 46 Teen services	270-225-8471
Girl Scouts	888-771-5170
Impact Mentoring	270-821-0688
Muhlenberg Achieves	270-977-9275
Muhlenberg Co. Boy Scouts	270-338-5070
The Learning Center	270-245-2600
4-H (UK Ext. Office)	270-338-3124

Community Development

Central City Tourism Commission	270-754-9603
Greenville Tourism Commission	270-338-1895
Muhl. Co. Chamber of Commerce	270-754-2360 or 338-5422
Muhlenberg Alliance for Progress (MAP)	270-338-4102
Muhlenberg Co. Public Libraries	270-338-4760

Crisis/Emergency Assistance (911)

AIDS Hotline	1-800-420-7431
American Red Cross	270-338-2818
Central Dispatch Emergency	270-338-2000
Center for Disease Control	1-800-232-4636
Pathway of Hope (Pregnancy)	270-377-0045
Poison Control	1-800-222-1222
Pregnancy Crisis Center	1-800-432-9337

Crisis/Emergency Assistance (continued)

Rape Crisis Hotline	1-800-422-1060
Sanctuary House	270-641-0169
Suicide Prevention	1-800-273-8255
Pennyroyal Center	270-338-5211
24 hour line	1-877-473-7766

Disability Services

ADD/ADHD Children	1-270-886-5163
Brain Injury Association of KY	1-800-592-1117
Commission for Children w/ Special Health Care Needs	1-800-232-1160
Commission for Deaf & Hearing Impaired	1-800-372-2907
First Steps	1-877-473-7766
Kelly Autism (WKU)	270-745-0111
KY Office of Vocational Rehab	1-800-372-7172
Learning Disabilities Assoc. of KY	1-502-473-1256
Muhlenberg Opportunity Center	270-338-5970
March of Dimes (West KY)	1-270-683-2410
Multiple Sclerosis	1-800-873-6367
Pennyroyal Center	877-473-7766
Programs for Children w/ Disabilities:	
Infants & Toddlers (ages Birth- 2)	1-800-442-0087
Children, ages 3-5	1-502-564-7056
Shriner's Rizpah Temple	1-270-821-3187
Social Security Administration	1-800-772-1213
Western KY Easter Seals Center	1-270-444-9687
United Cerebral Palsy (KY)	1-502-635-6397

Employment Services

Career Advancement & Partners	270-338-5939
Department for Employment Services	270-338-3654
Department for Unemployment	270-338-3654
KY Office of Vocational Rehab	1-800-372-7172
Muhlenberg Alliance for Progress (MAP)	270-338-4102
People Plus, Inc. (temp agency)	270-377-0088
Perdue Farms	270-274-6063
Workforce Development Cabinet	1-270-824-7549

Fitness / Recreation

Central City Convention Center	270-757-1723
QuickFit	270-977-1728
Muhlenberg Co. Parks & Recreation	270-377-1900
Western KY RV Park	270-757-0345

Government & Legal Services

City of Central City	270-754-5097
City of Greenville	270-338-3966
Circuit Clerk	270-338-4850
County Clerk	270-338-1441
County Attorney	270-338-1322
District Judge	270-338-0995
Judge Executive	270-338-2520
Western KY Legal Aid	1-800-782-1924

HEALTHCARE RESOURCES

Cancer

KY Cancer Program

270-821-4298

Clinics/ Health/Hospital

Baptist Health Powderly Clinic

270-377-1600

Baptist Health System:

1-800-733-2312

& 1-800-998-5100 (#s for Baptist Health, satellites, Care Center & Baptist Health Hospital)

Coal Miners' Respiratory Clinic

270-338-8300

Community Health Centers of Western KY (sliding fee)

270-338-5777 | 270-338-6488

270-377-3077

Dr. James Brashear

270-754-3880

Dr. Slobodan Jugo

270-338-6650

Fast Pace Urgent Care Central City

270-931-2059

FMC Dialysis Center

1-800-881-5101

KY Healthcare Access Hotline

1-800-633-8100

Muhlenberg Co. Health Dept.

270-754-3200

Noffsinger Physical Therapy

270-377-1810

Owensboro Health Muhlenberg Community Hospital

270-338-8000

Owensboro Health Muhlenberg Healthplex

270-377-2600

Owensboro Health Muhlenberg Medical Office

270-377-2440

Counseling/ Mental Health Facilities

A New Start

270-754-3494

Addiction Center for Treatment

1-800-711-6402

AL-ANON

1-800-356-9996

Alcoholics Anonymous

1-800-606-6047

Anorexia-Bulimia Hotline

1-800-854-0318

Baptist Counseling Center

1-270-825-8232

Baptist Health Behavioral Health Unit

270-825-5650

Celebrate Recovery

270-338-6160

Community Health Centers of Western KY

270-338-5777, 270-338-6488, 270-377-3077

Cumberland Hall Psychiatric Hospital

270-886-1919

Illuminare Behavioral Health

270-377-7153

KY Baptist Children's Home

1-502-538-1003

New Horizon Counseling

270-338-2280

Pennyroyal Center

270-338-5211

24 hour line

1-877-473-7766

Rivendell Psychiatric Hospital

1-800-548-2621

River Valley Behavioral Health

270-689-6500

Western State Mental Hospital

1-800-449-1189

Christian Counseling Center

270-338-6841

Chiropractic Services

Central City Chiropractic

270-754-1335

Tillman Family Chiropractic

270-971-4847

Vincent Chiropractic Center

270-338-3348

Dentist/Orthodontist

Conners & Underwood DMD PLLC

270-754-9494

Dental Referral Service

1-800-243-4444

Dr. David Morehead

270-754-1888

Dr. Susan Brewer Hunt

270-754-3131

Dentist/Orthodontist (continued)

Eades Family Dentistry

270-754-1404

Dentist/Orthodontist (continued)

Thompson Dental	270-338-5050
Muhlenberg Dental Center (Dr. Brown/ Dr. Clark)	270-338-0606
Dr. Anthony Durall (Orthodontist)	270-683-0275
Dr. William R. Millay (Orthodontist)	270-338-0008

Health & Safety Information/Education

Muhlenberg Co. Cooperative Ext. Service	270-338-3124
Muhlenberg Co. Health Department	270-754-3200

Home Health Care / Equipment & Supplies

Baptist Health Home Health	270-754-4702
Community Oxygen & Medical	270-754-3187
Greenville Pharmacy	270-338-3800
Kings Drug & Home Care	270-338-7738
OHMCH Home Health	270-754-9340
Poole's Pharmacy Care	270-754-1545

Hospice

Baptist Health Hospice	270-326-4660
Green River Hospice	1-800-350-3486
Hospice of Western KY	1-270-926-7565 1-800-466-5348

Medical Card Eligibility

Family Support/Food Stamps	1-855-306-8959
Healthcare.gov (Health Insurance)	1-800-318-2596
KCHIP (KY Child Health Insurance Program)	1-844-407-8398
KY Health Insurance Exchange	1-844-342-6604

Pharmacies

Clinic Pharmacy	270-754-4300
Clinic Pharmacy South	270-476-3600
Clinic Pharmacy Powderly	270-377-0123
Gentry Pharmacy Group	270-754-4300
Greenville Pharmacy	270-338-3800
Medical Center Pharmacy	270-338-9993
Poole's Pharmacy (Central City)	270-754-1545
Poole's Pharmacy (Greenville)	270-338-6060
Walgreens	270-338-4241
Wal-Mart Pharmacy	270-754-3924
RX Assist	270-338-6222

Substance Abuse

A New Start	270-754-3494
Alcohol Abuse & Drug Rehab	270-338-6113
Alcohol Detox & Drug Center	270-377-3585
Alcoholics Anonymous	1-800-840-0762
Celebrate Recovery	270-338-6160
Drug & Alcohol Help/Info	1-800-432-9337
New Creation Grace Home	270-641-0684
Pennyroyal Center	1-877-473-7766
Set Free Ministries	270-377-0075
Trilogy (Women's Services)	1-270-885-2902

Vision/Optometry

Dr. Adam Coats	270-338-4091
Dr. John Soderling	270-338-9636
Dr. Kelly Tarter	270-338-2400
Oak Tree Eye Clinic (Dr. Tyler Mayes)	270-754-4515
Wal-Mart	270-754-3924
Dr. Paul Herrell (Ophthalmologist)	270-886-2020

Housing

Glenbrook House Apartments	270-338-3641
Greenville Park Apartments	270-338-9988
Hillwood Village Apartments	270-754-2282
Housing Authority: Central City	270-754-2521
Housing Authority: Greenville	270-338-5900
KY Department for Housing	1-800-669-9777
Low Income Housing	270-338-0460
Pennyrile Housing Corp.	1-800-928-7233 or 1-270-886-9484

Law Enforcement

Emergency	911
Abuse Hotline	1-800-752-6200
Ambulance Service (non-emergency)	270-338-1233
Central City Police (non-emergency)	270-754-2464
Central Dispatch	270-338-2000
Emergency & Disaster	270-338-3902
Greenville Police (non-emergency)	270-338-3133
KY State Police	1-800-222-5555
Missing Children	1-800-843-5678
Sheriff (non-emergency)	270-338-3345

Legal Services

Child Support Enforcement	1-800-248-1163
Department Community Based Services	270-338-3072
DUI Services	270-338-2280
Legal Helpline for Elderly	1-800-200-3633
Western KY Legal Aid	1-800-782-1924

MUHLENBERG CO. SCHOOLS (270-338-2871)

Head Start

Bremen Head Start	270-525-3918
Central City Head Start	270-754-3974
Greenville Head Start	270-338-4314
Longest Head Start	270-338-6337
Muhlenberg South Elementary Head Start	270-476-9841
Muhl. Co. Head Start Main Office	270-754-2418

Schools (Kindergarten-12)

Bremen Elementary	270-525-6686
Central City Elementary	270-754-4474
Greenville Elementary	270-338-4830
Longest Elementary	270-338-5113
Muhlenberg Co. Board of Education	270-338-2871
Muhlenberg North Middle	270-338-3550
Muhlenberg So. Elementary	270-476-2204
Muhlenberg South Middle	270-338-4650

Schools (Kindergarten-12) (continued)

Muhl. Co. High East Campus (9-10) 270-338-9409
Muhl. Co. High West Campus (11-12) 270-338-0040
The Renaissance Center (alternative learning) 270-338-0662

Family Resource/Youth Service Centers

Bremen Elementary 270-525-6388
Central City Elementary 270-754-4409
Greenville Elementary 270-338-4231
Longest Elementary 270-977-0460
South Elementary 270-476-0000
Muhlenberg North Middle 270-338-3381
Muhlenberg South Middle 270-377-3513
Muhlenberg Co. East Campus 270-338-9409
Muhlenberg Co. West Campus 270-338-3676

Private Schools

ACT Christian Academy 270-338-1630

Parenting Services

Adoption Hotline 1-800-432-9346
First Steps 270-886-5186
HANDS 270-754-4017
Kentucky Adoption Services 1-866-543-7459
Muhlenberg Co. Health Dept. 270-754-3200
Opportunities for Life: Statewide 24/7 Pregnancy Hotline 1-800-822-5824 (English)
1-800-860-7165 (Spanish)
Pathway of Hope 270-377-0045
SIDS Back to Sleep Campaign 1-800-505-2752

Transportation

Muhlenberg Co. Senior Citizens Center (PACS) 270-338-6222
PACS Transportation- Muhlenberg and Todd Counties 270-931-5119 or 270-931-5118

Approval

This Community Health Needs Assessment was approved by Owensboro Health Muhlenberg Community Hospital Board of Directors on May 17th, 2021.